

oculus

Summer 2015

A Publication of the American Institute of Architects New York Chapter Volume 77, Issue 2 | \$10

2015 AIA NY

DESIGN

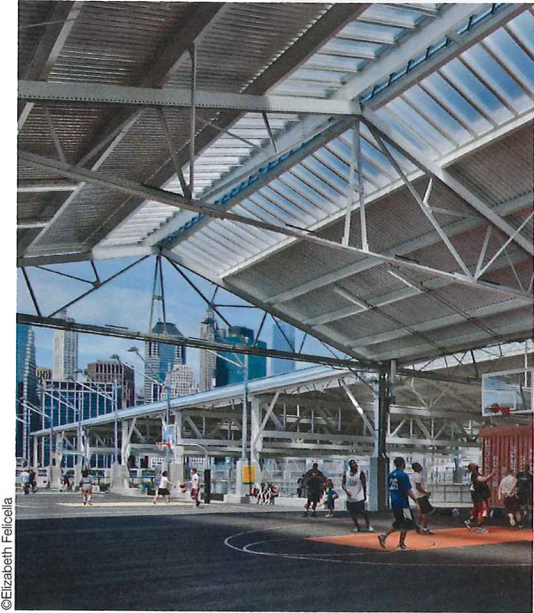
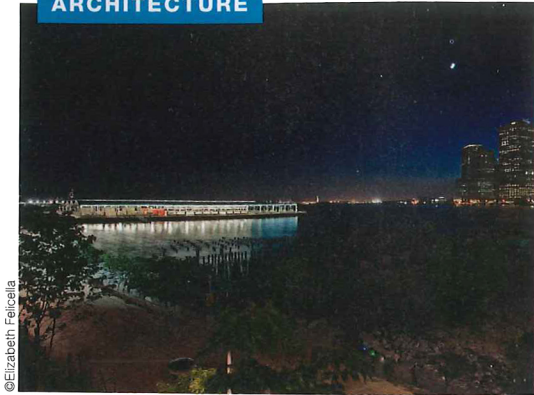
AWARDS

ARCHITECTURE

INTERIORS

URBAN DESIGN

PROJECTS



Pier 2 at Brooklyn Bridge Park Brooklyn, NY

Architect: Maryann Thompson Architects
Client: The Brooklyn Bridge Park Corporation

Instead of being demolished to create a new sports complex, an abandoned waterfront warehouse was adaptively reused and transformed into a four-acre recreation hub. Conceived as a “toy box” for Brooklyn Bridge Park, Pier 2 contains courts for basketball, handball, tetherball, and bocce ball, and even has a roller rink. All are suspended between the continuous pier deck surface and the existing roof plane. New corrugated-metal panels cover select parts of the original structure, leaving voids that frame views of the sky, river, and Manhattan Skyline.

PIER 2, CONTINUED
MARINE & SITE
INFRASTRUCTURE: AECOM
(formerly DMJM Harris)
STORM WATER REUSE
CONSULTANT:
Nitsch Engineering
GRAPHIC DESIGN: Open

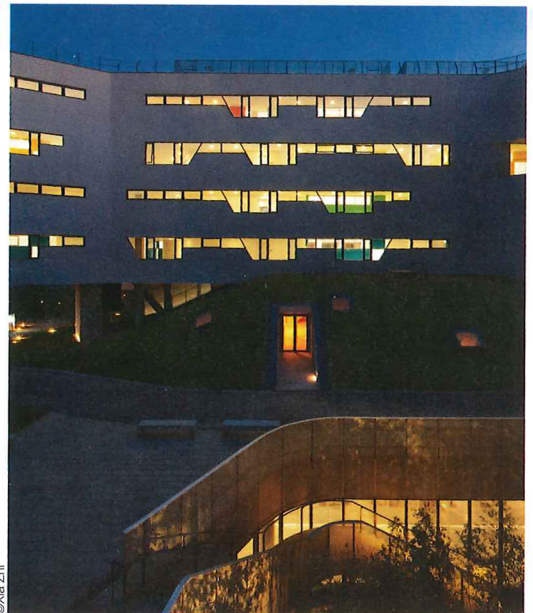
PIER 2, CONTINUED
SOIL SCIENCE: Pine & Swallow
WATER FEATURE CONSULTANT:
R.J. Van Seters Company
CODE CONSULTANT:
James Macdonald
CONSTRUCTION MANAGER:
Turner

◀ Jury: “This is a modest, low-budget project, and the architect determined what should stay and what should go. Very powerful.”

MARYANN THOMPSON
ARCHITECTS DESIGN TEAM:
Maryann Thompson, FAIA,
Evan Mathison, Bill Pevear,
Martha Foss, Zac Cardwell
ARCHITECT-OF-RECORD:
Easton Architects
LANDSCAPE ARCHITECT:
Michael Van Valkenburgh
Associates
PARK BUILDINGS ARCHITECT
& M/E/P: Paulus, Sokolowski
and Sartor
STRUCTURAL ENGINEER:
Ysrael A. Seinuk
M/E/P ENGINEERS:
Becht Engineering (comfort
station); AECOM (pier)
LIGHTING DESIGN: Domingo
Gonzalez Associates

Jury: “How to reconcile large-scale projects with intimacy of scale. For a large project, it has a sense of place. Quite artfully treated.” ▶

OPEN ARCHITECTURE DESIGN
TEAM: Li Hu, Huang Wenjing,
AIA, RA, Daijiro Nakayama,
Ye Qing, Zhang Hao,
Zhou Tingting, Thomas
Batzenschlager, Zhang
Chang, Jotte Seghers, Wang
Yifan, Yu Qingbo
ASSOCIATE ARCHITECT:
Beijing Institute of
Architectural Design
LANDSCAPE ARCHITECTS:
OPEN Architecture + MILAND
DESIGN
LIGHTING DESIGN:
Lighting Design Partnership
International
CONSTRUCTION MANAGER:
Vanke COFCO
SUSTAINABILITY CONSULTANT:
School of Architecture,
Tsinghua University
CURTAIN WALL CONSULTANT:
Inhabit Group
ACOUSTICS CONSULTANT:
Clacell
SIGNAGE DESIGN: Beijing
Trycool Culture and Art
Development Co., Ltd.



Garden School/Beijing No. 4 High School Fangshan Campus Beijing, China

Architect: OPEN Architecture
Client: Changyang Government of Fangshan
District, Beijing

The design of the 621,863-square-foot school expresses the desire to create more open green spaces. That, combined with site limitations, inspired a vertical strategy of separating the programs into above and below, and inserting multiple gardens in between. The lower part of the building contains large non-repetitive public functions such as the cafeteria, auditorium, gym, and swimming pool, which push up the ground into various mound shapes whose roofs form landscaped gardens. The multistory upper building is a thin, rhizome-shaped super slab that contains the more repetitive programs of classrooms, labs, and dormitories, topped by a continuous urban farm. The project aims to achieve China's first triple-green-star-rated school, a standard that exceeds LEED Gold.