



HOUSE101 & HOUSING

George Lam



Westport Meadow House

Maryann Thompson Architects

Client/owner
Douglas Reed and William Makris

Location
Westport, Massachusetts, USA

Landscape architect
Reed Hilderbrand Associates, Inc.

Structural engineer
Richmond So Engineers, Inc.

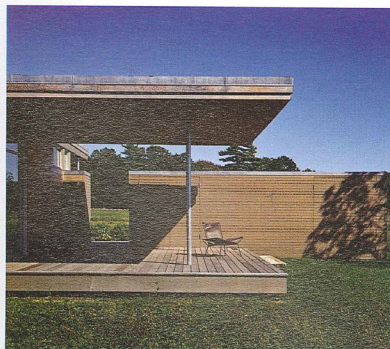
Contractor
Kendrick Snyder Builders

Furniture
Thad Hayes, Inc.

Photography
Chuck Choi Architectural Photography

This one story house nestles in a forty-acre meadow on the Westport River. The house was conceived as an “indoor/outdoor” space which is firmly rooted to its site. A space of 167 sq.m. of deck stretches along the western elevation and perforates the plan at the entry, creating a modified “dogtrot.” Enclosed by the living room and master bedroom, this dogtrot space becomes an “interiorized” outdoor room and a threshold between public and private spaces. Large sliding doors at the living room and master bedroom corners open onto the deck, inviting light and cross-ventilation into the body of the scheme, and allowing for a dual reading of these rooms as both interior and exterior spaces. When the doors are fully open, these spaces read as “screened porches” rather than traditionally enclosed rooms. Floor and ceiling planes in the living room and bedrooms continue onto the decks, furthering the ambiguity between inside and outside space. Light passes through the four-sided clerestory in the living room, illuminating the volume with changing patterns throughout the day and across the seasons.

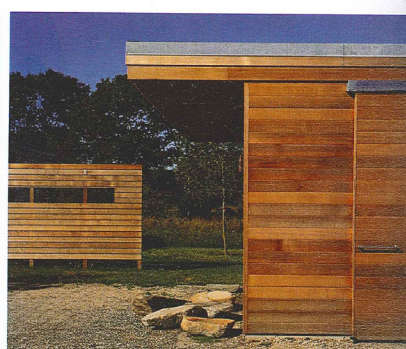
A wood-clad “organizing wall” skewers the scheme, around which the program spaces wrap. Storage, HVAC, kitchen appliances and laundry areas are concealed within to preserve unobstructed connection to the landscape. The organizing wall serves as a deep threshold, heightening and reinforcing one’s layered passage from the meadow to the river. Program elements are distributed across the threshold depending upon their peak occupancy. The kitchen, breakfast area and office face east to take in morning light, while the combined living/dining room, bedrooms and decks face west and south for afternoon sunsets. Deep overhangs on the western elevation shade the expansive glass creating a shady exterior place to sit and accentuating the overall horizontality of the house, connecting it to the horizon by way of the meadow and river beyond. By utilizing a subtle and simple palette, the design echoes its setting while adhering to a fixed budget.



A wood-clad organizing wall skewers the scheme, defining the transition between meadow and river.



The private, outdoor shower on the house's north side is an extension of the master bedroom suite.



Selective openings in the façade reveal and conceal views of the river to build mystery and suspense.



Sliding doors open the corners of the master bedroom and living room and living these rooms as interior and exterior spaces.

allowing for a dual reading of interior and exterior spaces.



Approaching along the wooded entry drive, the house appears from behind a layer of stone walls and the gentle slope of the meadow.





A linear clerestory wraps the living room, lifting the roof volume and flooding the space with natural light.



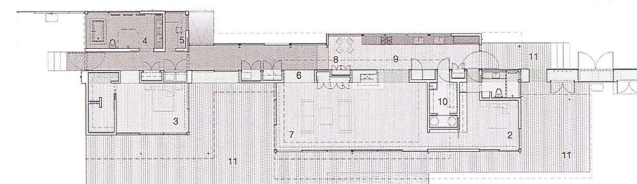
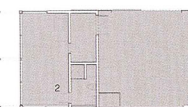
A modified dogtrot perforates the plan at the entry, creating an "interiorized" outdoor room, while bringing light and cross-ventilation into the interior.



Steps down and transitioning materials between the entry hall and the living room emphasize the sloping grade and movement from meadow to river.



Sliding partitions at the guest bedroom allow for privacy while preserving unobstructed sightlines through the living room to the landscape



1. Garage
2. Guest room
3. Master bedroom
4. Master bath
5. Study
6. Utility closet
7. Living room
8. Breakfast room
9. Kitchen
10. Laundry room
11. Deck

