

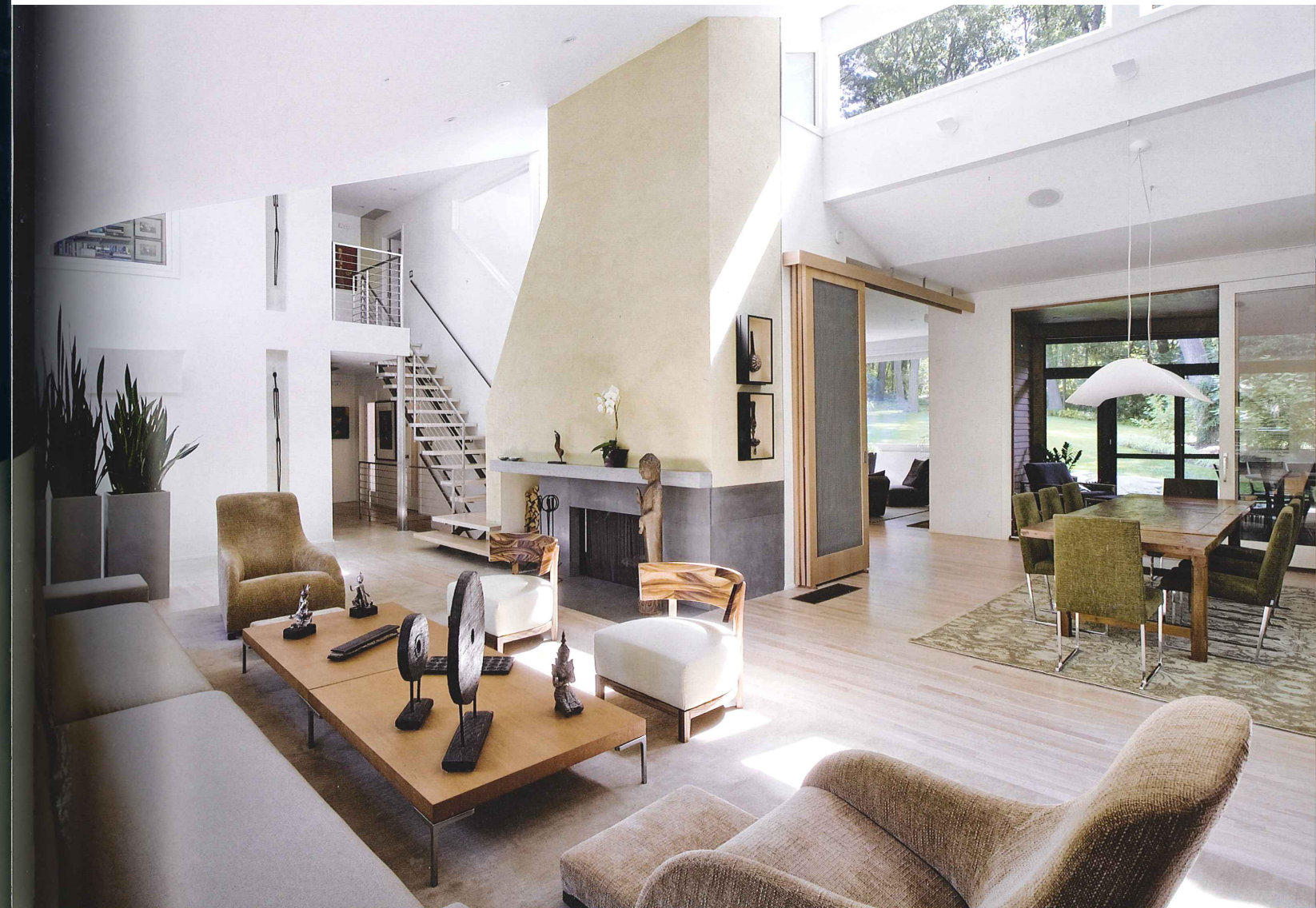
GROVE HOUSE

丛林别墅

Located in a historic district in Massachusetts, this renovated house was created from the bones of an existing house on a beautiful wooded site. The existing house suffered from dark and outdated interiors and lacked the connection between the interior and the exterior the Client desired. The house faces north. The design uses clerestory windows to bring in light from above, and sections to create spaces in the roof for light to enter. The house is clad in stained red cedar siding, and the interior is painted in different subtle shades of white to reflect the light. The new design expands the house from a single story with usable square footage of house to a three-story house of 6000 sf, with 4 bedrooms and 5 ½ bathrooms. Trellises were used as a design strategy for defining an outdoor room on the exterior, extending the living space beyond the enclosure of the actual structure and blurring the boundary between inside and outside.



设计公司：玛雅恩·汤普生设计公司
(Maryann Thompson Architects)
设计师：玛雅恩·汤普生
(Maryann Thompson)
项目地址：美国马萨诸塞州



这座需要改建的房屋坐落在马萨诸塞州老区的一片绿荫茂盛之地。黑暗老旧的室内环境已经同它的室外环境格格不入，客户希望能够改善室内环境。房子朝北，所以设计师利用天窗将顶上的光线引入，并使用隔面以增加屋顶的光进空间。房子侧面覆盖一层斑驳的红杉木，室内则用不同深浅的白色制造反光效果。新的设计将一个只有205平方米的单层房屋改造成了一栋558平方米的带有4个卧室和5个半浴室的三层别墅。设计师在室外造了棚子，将原本封闭的结构延伸，模糊了室内外的界限。

