

WWW.ASUMAG.COM
WWW.SCHOOLDDESIGNS.COM

AMERICAN

SCHOOL & UNIVERSITY[®]

SHAPING FACILITIES & BUSINESS DECISIONS

NOVEMBER 2009

architectural portfolio 2009

The Sourcebook for Award-Winning and Outstanding Education Design

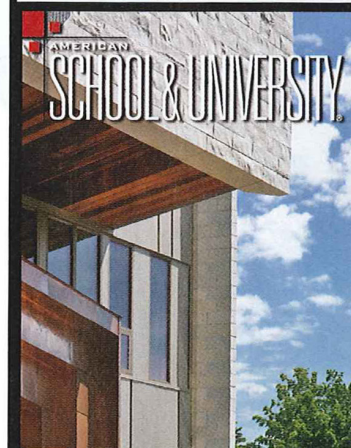
A PENTON MEDIA PUBLICATION

SPECIAL SECTION: Green Field Notes

DEPARTMENTS

- 6** EDITOR'S FOCUS
- 10** MEET THE JURY
- 12** COMMENTARY
- 230** CONSTRUCTION GUIDE
- 250** SPECIAL SECTION:
GREEN FIELD NOTES
- 277** STATE LISTING
- 280** INDEX TO ARCHITECTS/SUPPLIERS
- 298** AD INDEX/READER-SERVICE CARD

The information in this issue is provided with the express understanding and agreement that the information and data within it will be used internally and not for the creation or updating of mailing lists for sale or distribution to third parties.



On the Cover: Macalester College, Institute for Global Citizenship, St. Paul, Minn.
Architect: Bruner/Cott & Associates
Photographer: Richard Mandelkorn

Save the dates

AS&U announces entry dates for the 2010 Educational Interiors Showcase and Architectural Portfolio. Mark your calendars, and make plans to include your best projects next year. EIS 2009 entry forms are due March 5; portfolios are due April 2. AP 2009 entry forms are due June 7; portfolios are due July 9.

CONTENTS



William W. Caudill Citation p. 16

Louis I. Kahn Citation p. 18

14 MAIN WINNERS

- 24** ELEMENTARY SCHOOLS
- 58** MIDDLE SCHOOLS
- 68** HIGH SCHOOLS
- 105** POST-SECONDARY
- 149** SPECIALIZED FACILITIES
- 172** RENOVATION/MODERNIZATION
- 204** WORK IN PROGRESS
- 214** COMMUNITY CENTERS/JOINT-USE FACILITIES
- 220** PROTOTYPE FACILITIES
- 221** CAMPUS MASTER PLANNING/
LANDSCAPE ARCHITECTURE

American School & University (ISSN: 0003-0945) November 2009, Volume 82, Number 3, published monthly, with an extra issue in March, free to qualified persons in the United States, by Penton Media, Inc., 9800 Metcalf Ave., Overland Park, KS 66212-2216 (penton.com). Subscription rates: Free and controlled circulation to qualified subscribers. Non-qualified persons may subscribe at the following rates: USA: 1 year, \$69, 2 years, \$109; Canada: 1 year, \$79, 2 years, \$139; other international: 1 year, \$99, 2 years, \$159. For subscriber services or to order single copies, write to American School & University, P.O. Box 2100, Skokie, IL 60076-7800 USA; call (866) 505-7173 (USA) or (847) 763-9504 (Outside USA); or visit www.asumag.com. Periodicals postage paid at Shawnee Mission, KS and additional mailing offices. Canadian Post Publications Mail Agreement No. 40612608. Canada return address: Bleuchip International, P.O. Box 25542, London, ON N6C 6B2. POSTMASTER: Send address changes to American School & University, P.O. Box 2100, Skokie, IL 60076-7800 USA. Allow 6 to 8 weeks for change of address. Copyright ©2009.

MAIN WINNERS

WILLIAM W. CAUDILL CITATION

**Maryann Thompson Architects with
Ingrid Strong**
The Children's School
Stamford, Connecticut p. 16-17

*"This school is reminiscent of the
Crow Island School. The design
approach plays with volumes
that create dynamic learning
environments filled with light."*
—2009 jury



LOUIS I. KAHN CITATION

schacht aslani architects
Peninsula College, Library and Administration
Building
Port Angeles, Washingtonp. 18-19

*"The juxtaposition of the new and
the old is very intriguing. The choice
of materials, design of spaces and
treatment of volumes create a light
and airy learning environment."*
—2009 jury



Visit SchoolDesigns.com.

SPECIAL CITATIONS

Marner Architecture
The Chapin School, Addition and Alterations
New York, New York p. 20

“Fantastic juxtaposition of exterior materials while respecting existing building rhythms. The spaces are configured well to maximize daylighting.”

—2009 jury



Maryann Thompson Architects
The Atrium School
Watertown, Massachusetts p. 21

“Beautiful and elegant transformation of an existing warehouse repurposed as a dynamic K-6 school.”

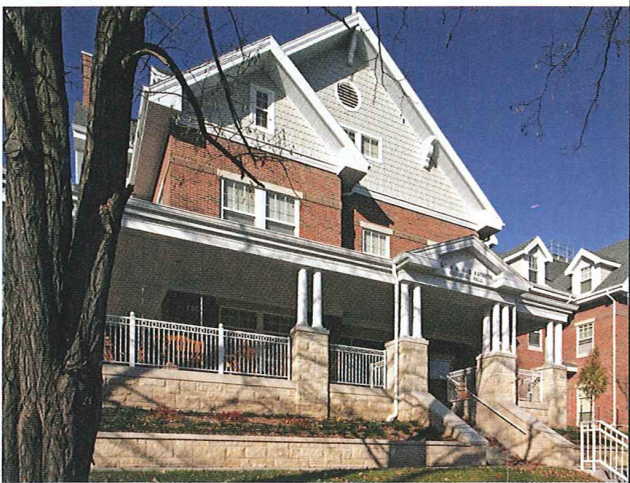
—2009 jury



Treanor Architects
University of Kansas, Krehbiel Scholarship Hall
Lawrence, Kansas p. 22

“A unique and warm, home-like atmosphere that blends well into the surrounding neighborhood. The recreation patio and outside dining area are a nice connection to the outdoors.”

—2009 jury



WILLIAM W. CAUDILL CITATION

The Children's School
Stamford, Connecticut



Maryann Thompson Architects with Ingrid Strong

Design team:
Maryann Thompson, Principal; Martha Foss, Project Manager; Ingrid Strong, James Steel, Tamar Warburg, David Martin, Ania Matteson, Maureen Murphy, Lulu McPhee, Leslie Ferraro

Client:
The Children's School; Maureen Murphy, Director

Capacity:
120

Area:
14,000 sq. ft.

Completion:
September 2007

Photographers:
Chuck Choi; Maryann Thompson

The design of this 14,000-square-foot school was conceived as a “one-room schoolhouse.” The roof planes tilt subtly against one another to admit light into the classroom spaces, which are defined without the use of walls. The scheme creates a fragmented reading of the building, appropriating the scale of the building to that of a child.

Designed to achieve LEED certification, this project treads lightly on Earth while heightening the student's sense of relationship to the site. The passive solar design with cross ventilation lowers the overall heating and cooling demands. The building opens to the south for maximum solar gain, and window louvers modulate the summer sun on the south and west elevations.

Natural and regional materials were selected from a durability and sustainability standpoint. Interior finishes free of volatile organic compounds (VOCs) create a learning environment with the best possible air quality. Covered outdoor spaces form an extension of the interior learning spaces. The entry area hosts quiet activities that calm the children upon arrival, acting as a space of mediation between the wings of the building.

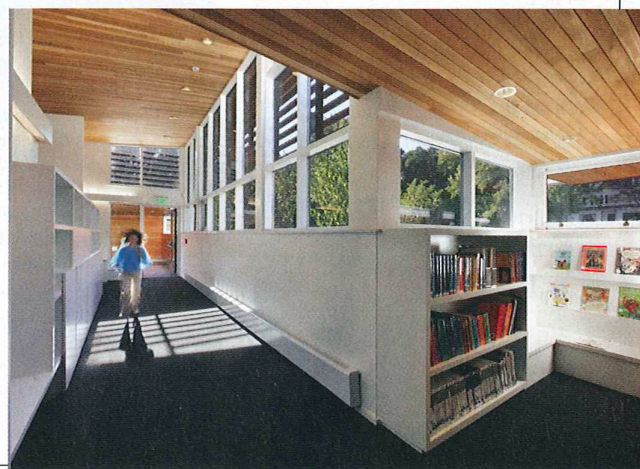


PRE-K/EARLY-CHILDHOOD EDUCATION



"This school is reminiscent of the Crow Island School. The building is multifaceted and adaptable to different age groups. The design approach plays with volumes that create dynamic learning environments filled with light."

—2009 jury



SPECIAL CITATION

RENOVATION/MODERNIZATION

The Atrium School Watertown, Massachusetts



Maryann Thompson Architects

Design team:
Maryann Thompson, Principal;
William Pevear, Project Manager;
Martha Foss, James Steel, Tamar Warburg,
David Martin, Ania Matteson

Client:
The Atrium School; Linda Echt and
Susan Diller, Co-Directors

Area:
25,000 sq. ft.

Total cost:
\$2.7 million

Cost/square foot:
\$108

Completion:
October 2006

Photographer:
Anton Grassl/Esto

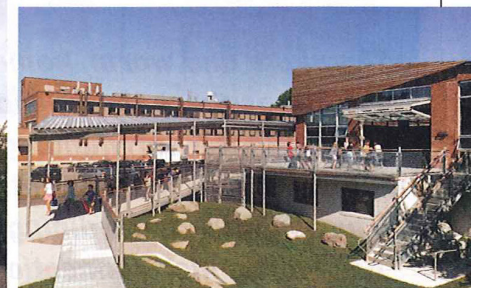
The Atrium School, a progressive K-6 program, looked to the architect to design a facility that called for the adaptive reuse of an open warehouse structure on a limited site in a densely populated residential area. The project was designed and built successfully in less than 10 months despite restrictive permitting and construction constraints.

The oblong site presented challenges, including how best to arrange parking areas, accommodate green space and orchestrate pedestrian and vehicular traffic through the site. The school's entrance and vehicular access were repositioned to the back of the campus away from the building's prior entrance, which faced a main thoroughfare. Cars were routed through the site to minimize the school's intrusion upon the community and reduce delays during peak hours.

Extensive glazing and skylights brighten the previously dark and enclosed warehouse spaces and facilitate cross ventilation. Large glazed garage doors open the assembly areas to the playground and bring in ample southern light. The double-loaded corridor was enlivened with special window nooks, which provide moments of rest and discovery, and an unfolding spatial experience.

"Beautiful and elegant transformation of an existing warehouse repurposed as a dynamic K-6 school."

—2009 jury



Before