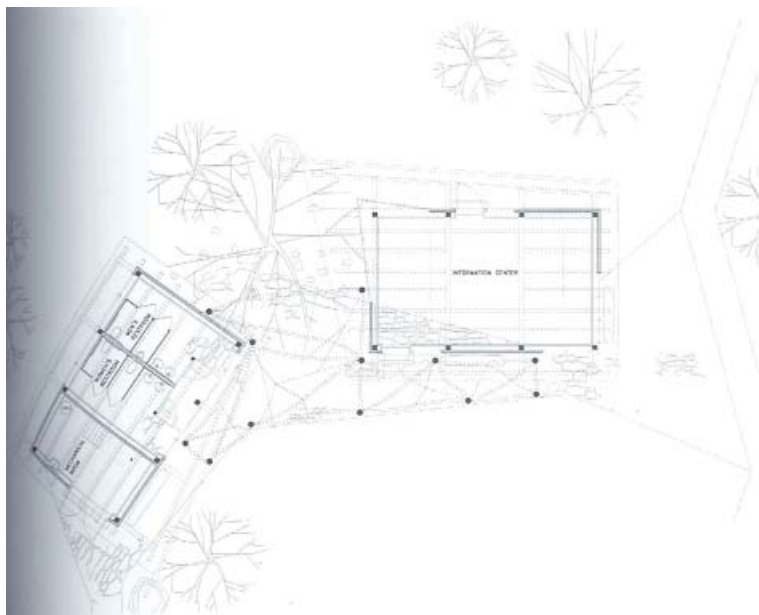




1000x

ARCHITECTURE
OF THE AMERICAS

BRAUN



01



02



03



04



POLLY HILL ARBORETUM VISITORS' CENTER

The information center and the bathroom building linked by a trellis topped with native locust boughs loosely define a space referred to as "The Holly Grove." The trellis provides a restful transitional zone between the landscape and the interior of the buildings. Their simple shed forms of Douglas fir derive their spatial subtlety through interaction with each other and the landscape. Like the trees encircling them, the buildings offer an airy interior with dappled light. The complex layering of the trellis, the heavy timber frame, and the perforated planes of the roofs mediate the natural light as the trees do above them.

01 Site plan 02 Airy Interior 03 Detail window seat 04 Exterior view 05 Trellis, topped with native locust boughs, connecting the buildings

Photos: Chuck Choi

CITY
Martha's Vineyard (MA)

COUNTRY
USA

REGION
North America

TPOLOGY
Public

COMPLETION
2001

WEBSITE
www.maryannthompson.com

ARCHITECTS
Maryann Thompson
Architects



01



02

THE CHILDREN'S SCHOOL

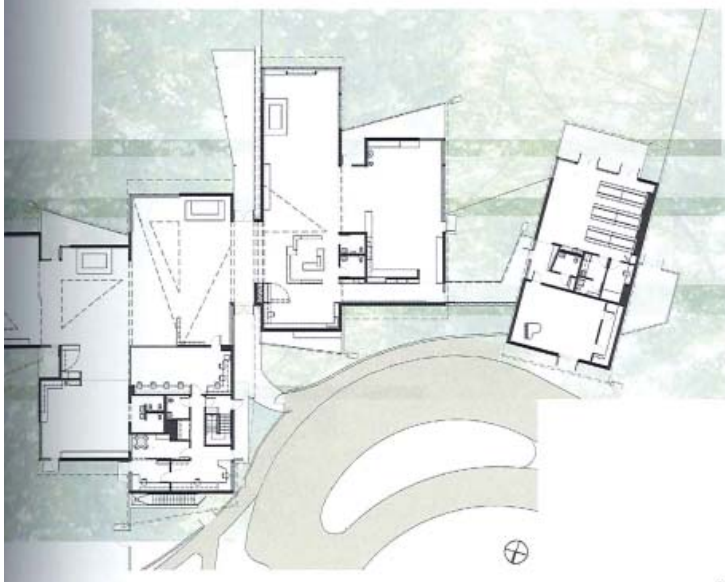
Conceived of as a "one room schoolhouse," this school's uninterrupted classroom space allows the children to move freely and visit different disciplines. The inner spaces are linked by a diagonal view through the overlapping spaces of the classrooms, and divided by the structural lines of the beams overhead and the variegated exterior wall condition. The younger children occupy the east-facing wing as they are only in school in the morning; the older children occupy the west wing to take advantage of afternoon light. The entry area hosts quiet activities that calm the child upon arrival, acting as a space of mediation between the two wings.

01 West wing 02 Entrance 03 Open interior 04 Floor plan
05 Overlapping classroom

Photos: Chuck Chai



03



04



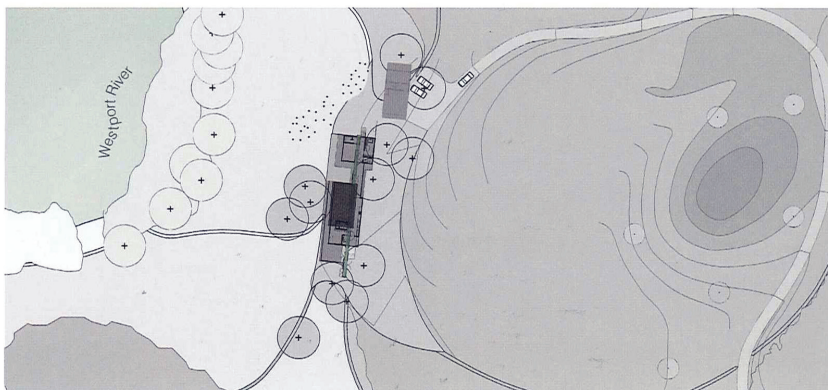
05

CITY
Westport (MA)COUNTRY
USAREGION
North AmericaTYPOLOGY
—COMPLETION
—WEBSITE
www.maryannthompson.comARCHITECTS
Maryann Thompson Architects

02



04



05

MEADOW HOUSE

This one-story house nestles into a forty-acre meadow and is conceived as an "indoor/outdoor" space which is firmly rooted to its site. A large deck stretches along the western elevation and perforates the plan at the entry. Enclosed by the living room and master bedroom, this space becomes an "interiorized" outdoor room and a threshold between public and private spaces. Floor and ceiling planes in the living room and bedrooms continue onto the decks, further blending inside and outside space. Light passes through the four-sided clerestory in the living room, illuminating the volume with changing patterns through the day.

01 Total view 02 View through and out of the living room
03 Reading rooms both as interior and outside spaces
04 Section 05 Site plan

Photos: Chuck Choi