

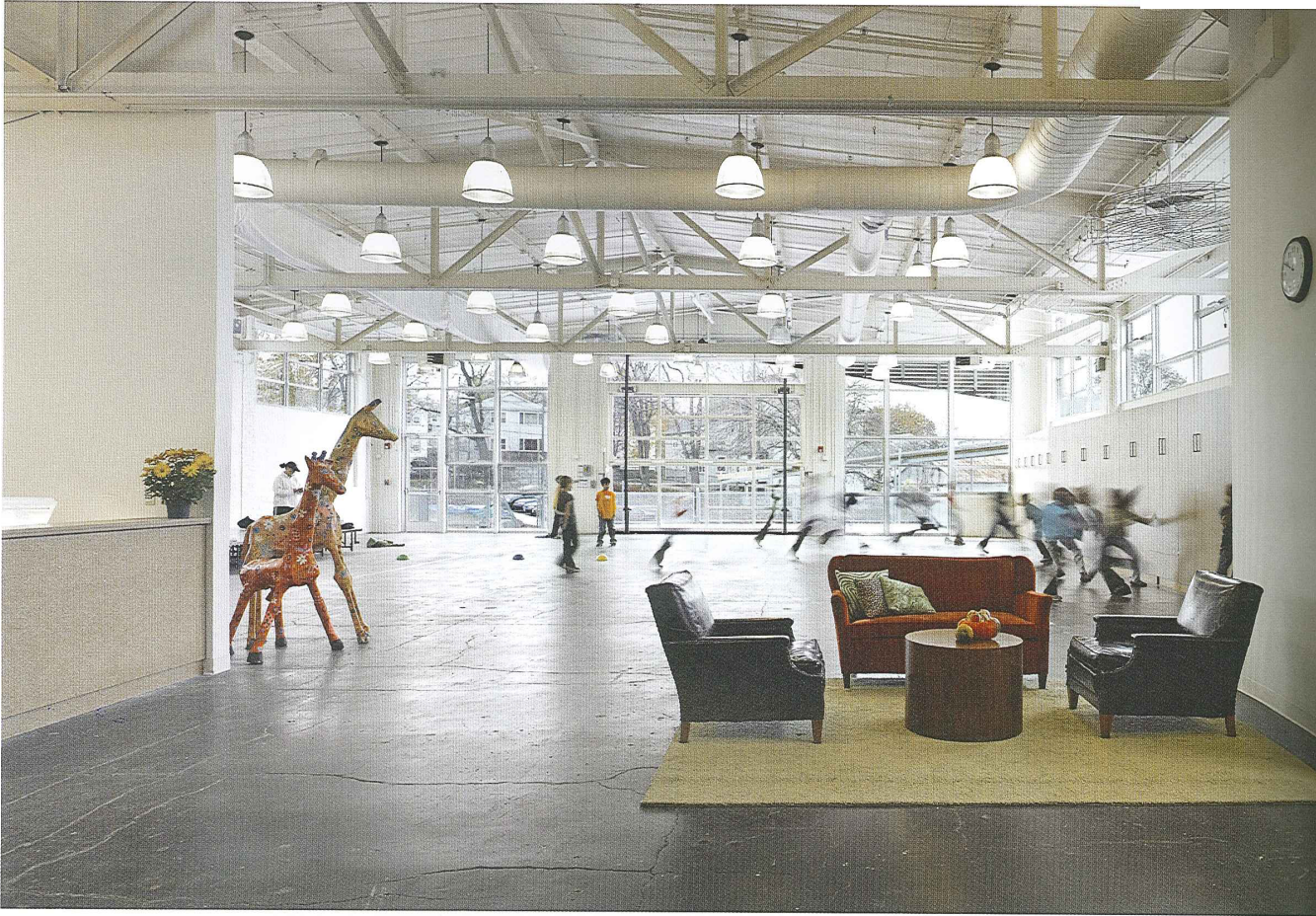


Schools

Sibylle Kramer

Educational Spaces

BRAUN



↑ | Playground
→ | Staircase

The Atrium School

Watertown

The Atrium school looked to Maryann Thompson Architects to design a facility that called for the adaptive reuse of an open warehouse structure on a limited site in a densely populated area. The oblong site presented specific challenges including how best to arrange parking fields, accommodate green space, and orchestrate pedestrian and vehicular traffic through the site. The school's entrance and vehicular access was repositioned to the back of the campus away from the building's prior entrance, which faced a main thoroughfare. Extensive glazing and skylights brightened the previously dark and enclosed warehouse space and also facilitated cross-ventilation. The double loaded corridor was enlivened with special window nooks, which provide moments of rest and discovery and an unfolding spatial experience.

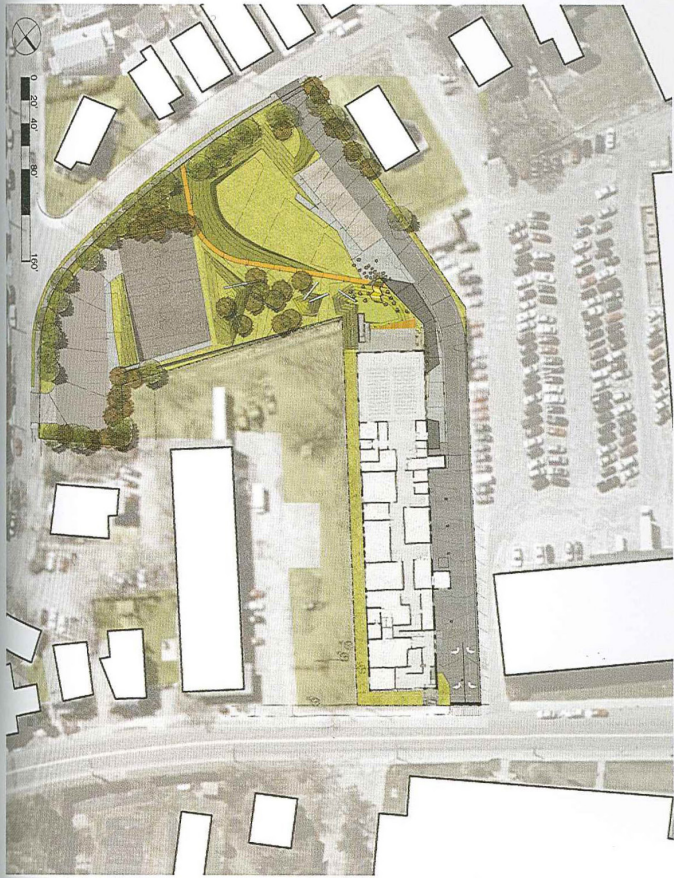
PROJECT FACTS

Address: 69 Grove Street, Watertown, MA 02472, USA. Completion: 2006. Size: 2,323 m².
School type: private / early education. Grades: kindergarden to grade 6.





THE ATRIUM SCHOOL



- ↖ | Exterior view
- ↗ | Learning spaces
- ← | New entrance to school
- ↑↑ | Floor plan, before
- ↑ | Floor plan, revised
- ← | Site plan