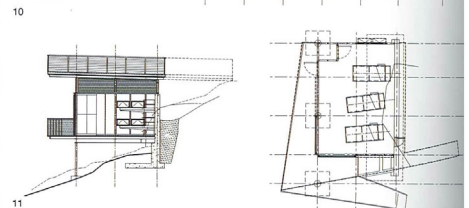
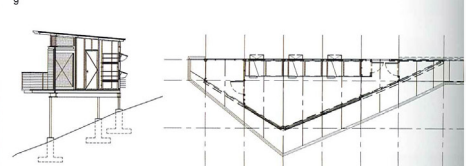
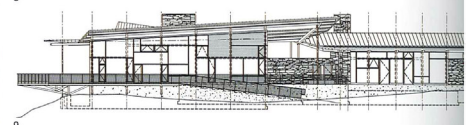
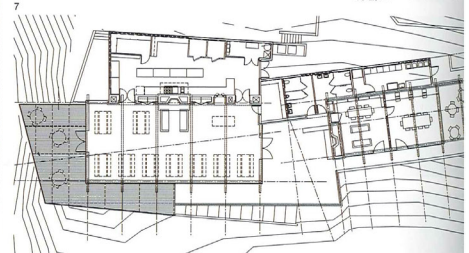
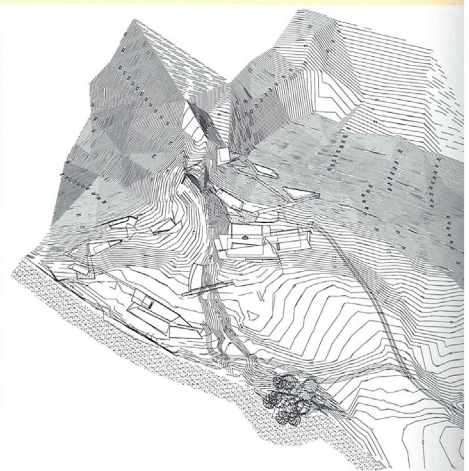
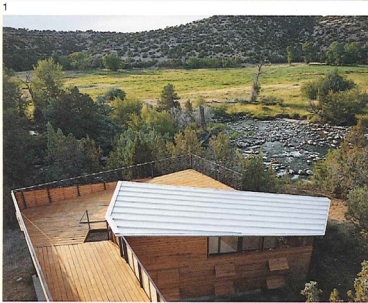


# THE PHAIDON ATLAS

OF CONTEMPORARY  
WORLD  
ARCHITECTURE





**879** The legendary landscape of the Big Horn Mountains of Wyoming exists in the vast scale of geological rather than human time. The Alm Foundation, a private Los Angeles charity, commissioned Charles Rose to build a camp for teenagers from inner-city Los Angeles on a 4,500 hectare (11,000 acre) ranch in this dramatic terrain. The programme included approximately 2,800 square metres (30,000 square feet) of space, including cabins for 76 campers, lodges for counsellors and directors, a dining hall and various education and recreation buildings. Charles Rose responded to the brief with 16 separate structures in three distinct groups clustered around the mouth of a canyon. The buildings are reflections on the nature of permanence, especially appropriate for a camp. The residential cabins are built on steel platforms supported by stilts, to tread lightly on the earth. The communal buildings, by contrast, are firmly grounded with extended concrete foundations that form new terraces. The formal language of the buildings reacts to the topography and geology of the local terrain: fissures in the roofs create openings for views and light. Local materials, such as

recycled heavy timber framing, were used as much as possible, to give the camp an indigenous quality.

1 The cluster of buildings merges into the drama of the landscape  
2 Timber-decked platforms provide views of the valley  
3 Construction materials are simple: timber, steel and stone  
4 Floor to ceiling glazing is contrasted with heavy masonry  
5 The cabins open up to the views  
6 The light steel structure and flying roof tread lightly on the earth  
7 Topographical site plan  
8 Dining hall plan  
9 Dining hall elevation  
10 Cabin 1 section and plan  
11 Cabin 3 section and plan

**Client**  
The Alm Foundation  
**Area**  
2,787m<sup>2</sup>/30,000 sq ft  
**Cost**  
US\$4,000,000